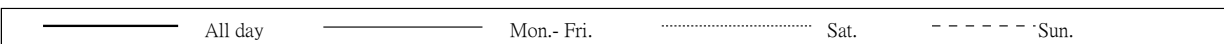
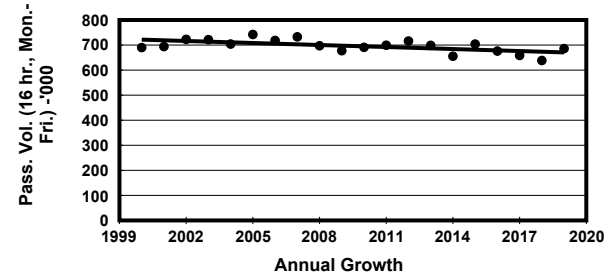
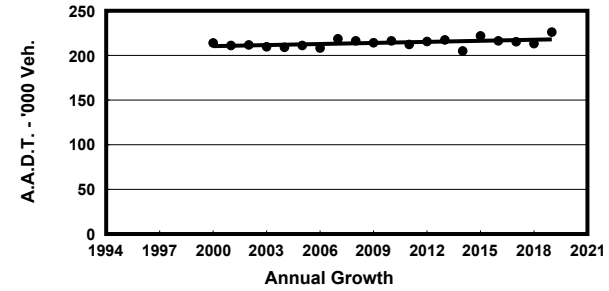
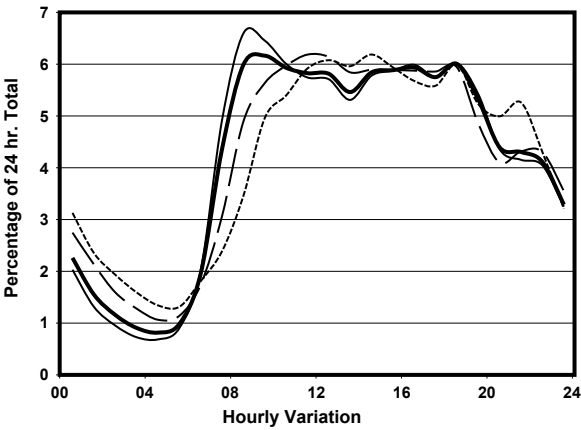
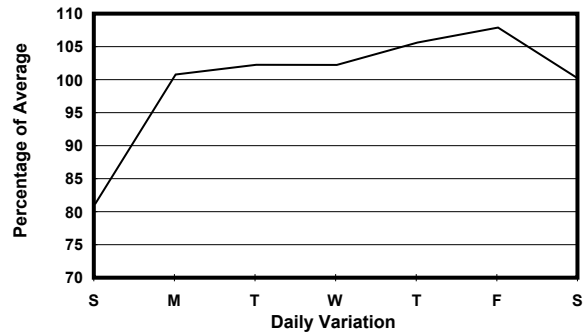
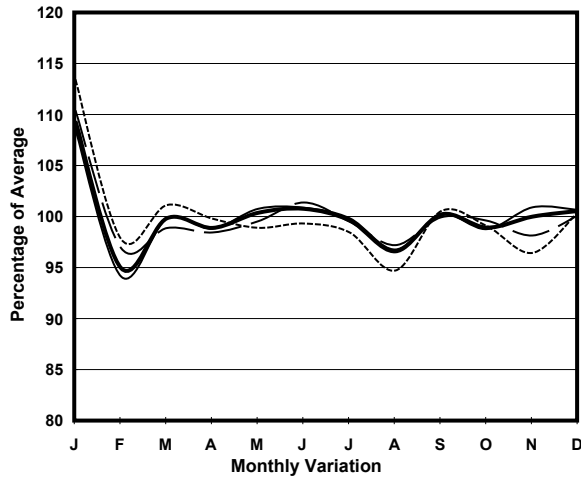


1. TRAFFIC FLOW VARIATION AND GROWTH



2. TRAFFIC CHARACTERISTICS (BY DIRECTION)

Parameter	All - Day	Mon. - Fri.	Sat.	Sun.
EAST BOUND				
A.A.D.T.	107930	112640	108610	91510
R 12 / 24 - %	66.6	67.8	63.8	62
R 16 / 24 - %	86.3	87.4	83	82.8
AM Peak Hour	0900-1000	0800-0900	0900-1000	0900-1000
One-way flow at AM peak hour	6210	6990	5410	4260
T - % (AM)	-	10.3	-	-
PM Peak Hour	1600-1700	1600-1700	1600-1700	1800-1900
One-way flow at PM peak hour	6490	6830	6490	5320
T - % (PM)	-	9.7	-	-
Prop.of commercial vehicles - 16 hr.	-	8.9	-	-
WEST BOUND				
A.A.D.T.	118180	124460	119780	93750
R 12 / 24 - %	71.2	72.3	70.2	65.1
R 16 / 24 - %	87.8	88.7	86.3	83.9
AM Peak Hour	0900-1000	0800-0900	0900-1000	0900-1000
One-way flow at AM peak hour	7720	8650	7460	4930
T - % (AM)	-	9.7	-	-
PM Peak Hour	1800-1900	1800-1900	1800-1900	1800-1900
One-way flow at PM peak hour	7320	7710	7410	5790
T - % (PM)	-	7.9	-	-
Prop.of commercial vehicles - 16 hr.	-	8.9	-	-

3. OTHER INFORMATION AND COMMENT

4. Vehicle classification and occupancy - Monday to Friday

Time		Class of vehicle									
		Motor Cycle	Private Car	Taxi	Private LB	PLB	Goods veh.		Non Fr. Bus	Fr. Bus	
							Light	M & H		SD	DD
0700-0800	Pro	3.2	35.0	31.9	4.1	1.4	10.2	2.2	5.3	0.3	6.4
	Ocp	1.1	1.3	1.9	7.1	8.8	1.4	1.2	19.4	20.4	40.6
0800-0900 Peak Hour	Pro	3.6	49.8	25.4	1.6	0.6	9.1	2.2	2.6	0.2	4.9
	Ocp	1.1	1.5	2.0	5.0	12.2	1.6	1.3	15.7	20.0	48.4
0900-1000	Pro	2.8	47.7	24.5	0.7	0.6	14.6	2.4	1.7	0.2	4.9
	Ocp	1.0	1.4	2.0	2.7	7.3	1.6	1.2	9.8	13.5	31.1
1000-1100	Pro	2.2	39.0	28.6	1.2	0.6	19.2	3.7	1.2	0.1	4.2
	Ocp	1.0	1.4	1.9	2.1	6.3	1.4	1.2	4.7	9.8	24.4
1100-1200	Pro	2.5	43.4	26.8	1.6	0.6	17.5	2.0	1.5	0.1	3.9
	Ocp	1.1	1.4	1.9	2.3	7.1	1.4	1.2	5.5	10.9	23.0
1200-1300	Pro	2.1	44.1	27.2	1.7	0.5	16.5	2.3	1.8	0.1	3.8
	Ocp	1.1	1.4	2.0	5.2	8.0	1.5	1.3	11.0	15.6	22.2
1300-1400	Pro	2.8	43.1	27.1	1.2	0.5	16.9	2.3	1.6	0.2	4.4
	Ocp	1.0	1.4	2.0	2.9	8.9	1.4	1.3	5.4	10.5	25.4
1400-1500	Pro	2.1	44.0	23.5	1.4	0.4	20.2	2.7	1.2	0.2	4.2
	Ocp	1.1	1.4	2.1	2.7	7.4	1.5	1.3	4.8	11.4	23.7
1500-1600	Pro	2.2	48.4	22.9	1.6	0.4	15.3	2.2	2.7	0.1	4.1
	Ocp	1.1	1.4	2.1	6.5	12.8	1.4	1.2	13.3	18.7	24.8
1600-1700	Pro	2.6	48.1	21.9	2.3	0.5	14.7	1.5	3.3	0.1	5.1
	Ocp	1.1	1.4	1.9	4.5	9.3	1.4	1.3	6.2	22.8	25.7
1700-1800	Pro	4.2	50.6	23.6	1.4	0.5	11.0	1.3	1.9	0.1	5.5
	Ocp	1.0	1.5	2.0	2.8	12.9	1.4	1.3	7.3	17.3	32.3
1800-1900	Pro	4.7	55.2	24.6	0.4	0.5	7.0	0.4	1.2	0.1	5.8
	Ocp	1.1	1.3	2.1	1.9	10.2	1.4	1.5	8.0	16.6	45.3
1900-2000	Pro	2.9	56.7	29.2	0.3	0.4	3.1	0.5	1.4	0.2	5.3
	Ocp	1.1	1.4	2.1	1.4	10.0	1.4	1.4	7.1	8.3	33.7
2000-2100	Pro	3.0	47.4	37.1	0.3	0.9	4.0	0.5	0.5	0.2	6.1
	Ocp	1.0	1.4	1.9	1.6	7.8	1.2	1.3	5.6	7.5	24.6
2100-2200	Pro	2.6	40.7	44.5	0.3	0.7	3.8	0.6	0.6	0.1	6.1
	Ocp	1.1	1.4	2.0	1.9	6.9	1.3	1.7	2.1	4.8	25.9
2200-2300	Pro	3.4	47.9	36.8	0.1	0.6	4.2	0.6	0.5	0.2	5.7
	Ocp	1.1	1.3	1.9	1.0	8.2	1.3	1.0	1.4	6.0	26.6
16 hours	Pro	2.9	46.5	27.8	1.3	0.6	12.2	1.8	1.9	0.2	5.0
	Ocp	1.1	1.4	2.0	4.3	8.9	1.4	1.3	10.4	13.6	30.8

Legend: Pro. Proportion of vehicles in % (Sum may not add up to 100% due to figure rounding)*

Ocp. Average occupancy of vehicles including both driver and passengers*

M&H Medium and Heavy

* All traffic data are collected from combined bounds