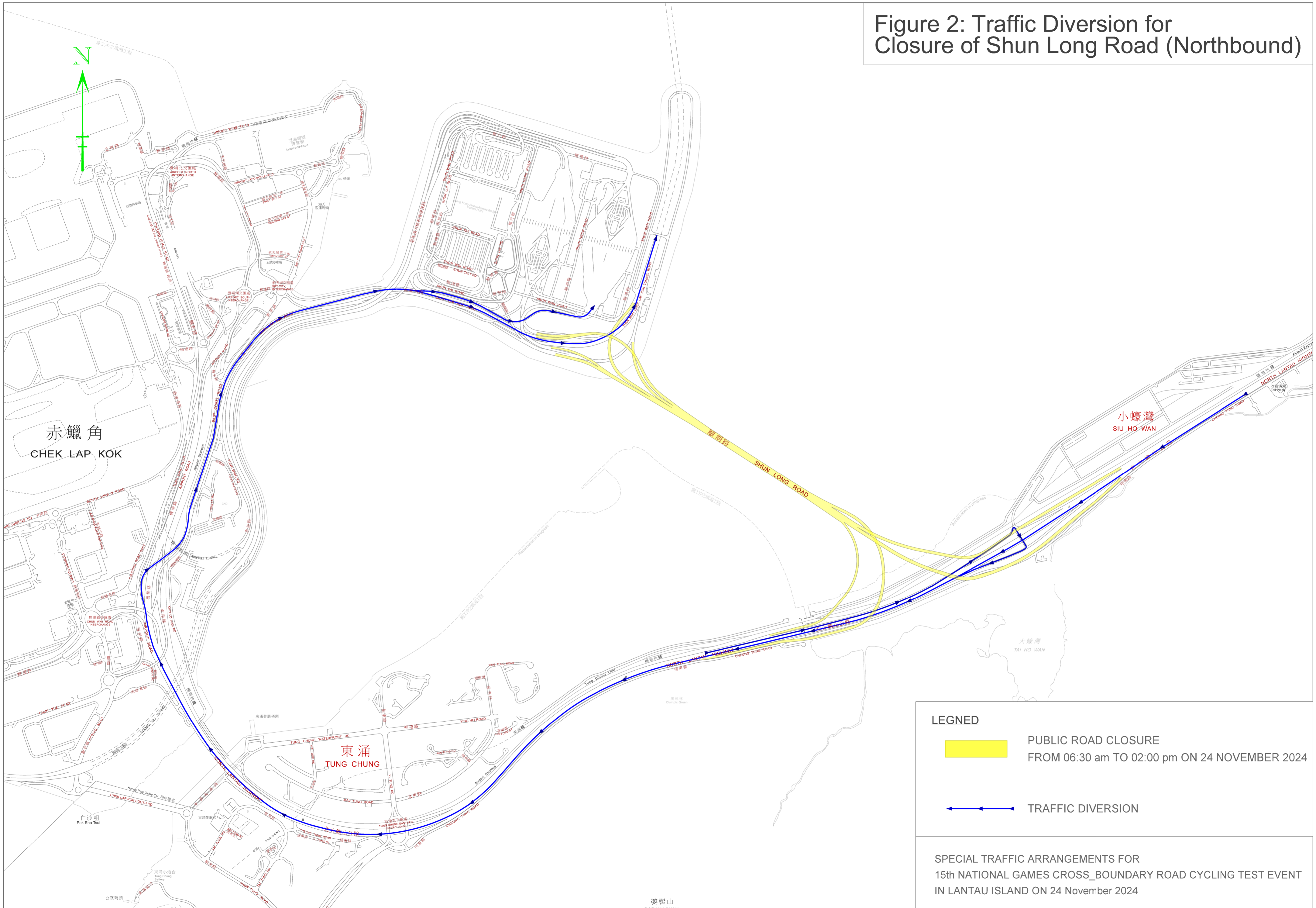
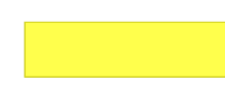


Figure 2: Traffic Diversion for Closure of Shun Long Road (Northbound)



LEGEND



PUBLIC ROAD CLOSURE  
FROM 06:30 am TO 02:00 pm ON 24 NOVEMBER 2024



TRAFFIC DIVERSION

SPECIAL TRAFFIC ARRANGEMENTS FOR  
15th NATIONAL GAMES CROSS\_BOUNDARY ROAD CYCLING TEST EVENT  
IN LANTAU ISLAND ON 24 November 2024