

連接至中九龍幹線  
CONNECT TO CENTRAL  
KOWLOON ROUTE

- 圖例：  
LEGEND:
- 地面道路  
ROADS AT GROUND LEVEL
  - 地庫一層道路  
ROADS AT B1 LEVEL
  - 地庫二層道路  
ROADS AT B2 LEVEL

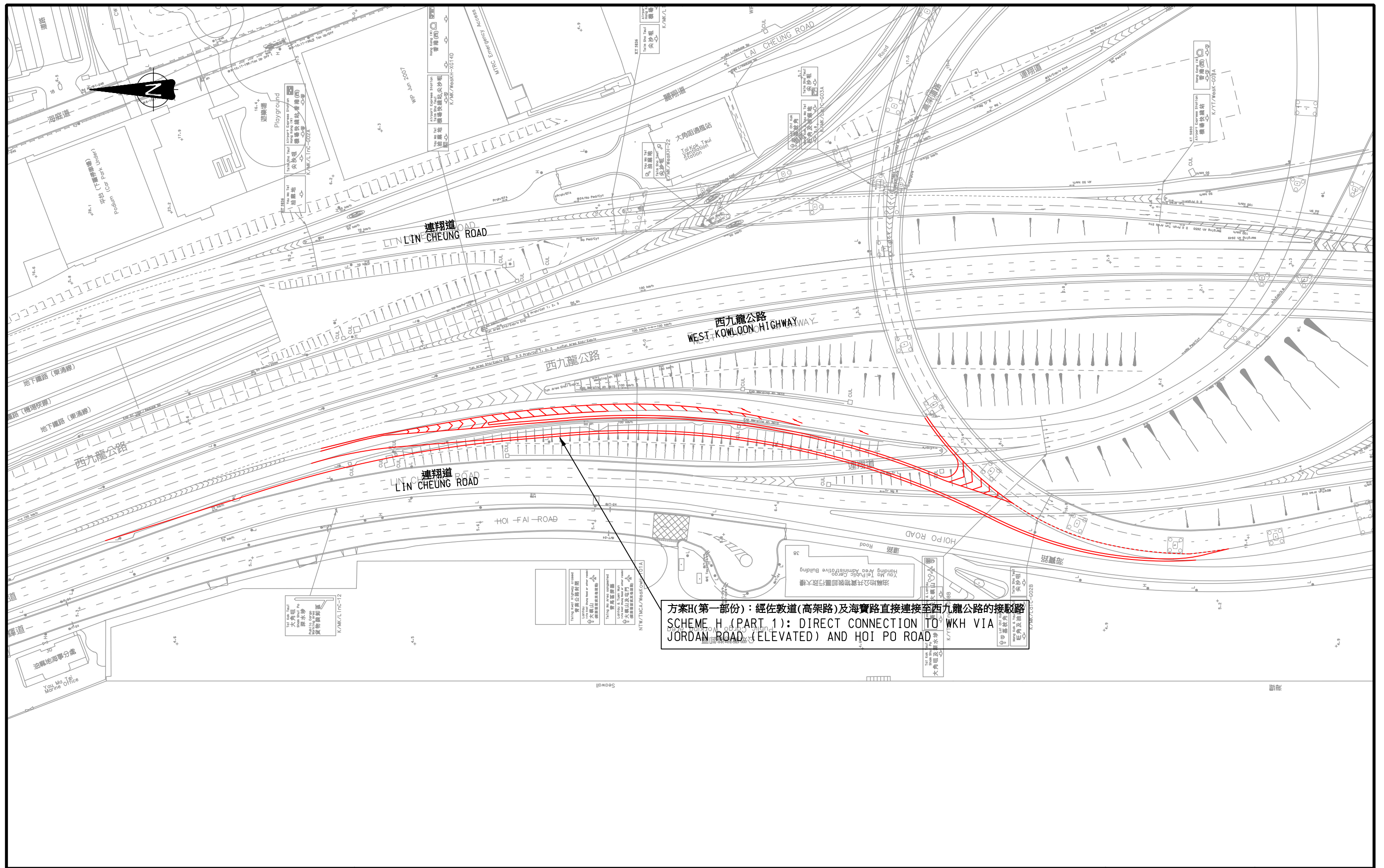
Rev.	Description	Approved	Date

合約編號TD54/2008西九龍填海發展區交通研究  
 AGREEMENT NO. TD 54/2008 WEST KOWLOON RECLAMATION DEVELOPMENT TRAFFIC STUDY  
**方案D2 - 連翔道-柯士甸道西行車隧道**  
**SCHEME D2 - LIN CHEUNG ROAD - AUSTIN ROAD WEST UNDERPASS**

Figure No.	<b>6.1</b>	Rev.	-
Designed By:	HEI	Scale:	1 : 4000
Checked By:	SPC	Date:	DEC. 2009
Ref.: 27814-1/ES/F61DGM/CKC/06JAN10			







方案H(第一部份)：經佐敦道(高架路)及海寶路直接連接至西九龍公路的接駁路  
 SCHEME H (PART 1): DIRECT CONNECTION TO WKH VIA JORDAN ROAD (ELEVATED) AND HOI PO ROAD

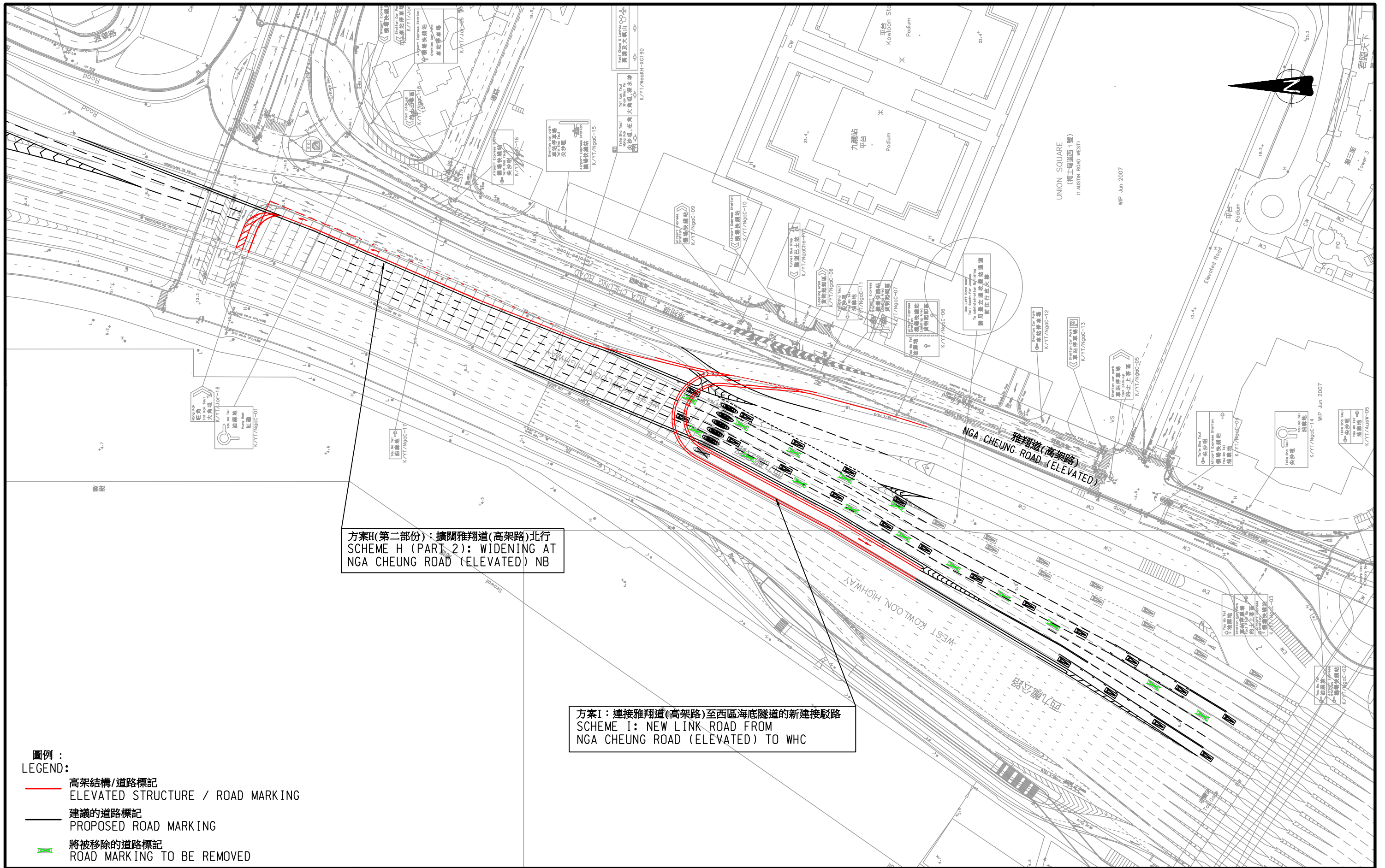
Rev.	Description	Approved	Date

合約編號TD54/2008西九龍填海發展區交通研究  
 AGREEMENT NO. TD 54/2008 WEST KOWLOON RECLAMATION DEVELOPMENT TRAFFIC STUDY

**方案H(第一部份)：經佐敦道(高架路)及海寶路直接連接至西九龍公路的接駁路**  
**SCHEME H (PART 1): DIRECT CONNECTION TO WKH VIA JORDAN ROAD (ELEVATED) AND HOI PO ROAD**

Figure No.	<b>6.3</b>	Rev.	-
Designed By:	HEI	Scale:	1 : 1500
Checked By:	SPC	Date:	DEC. 2009
Ref.: 27814-1/ES/F63.DGN/LKC/30DEC09			





方案H(第二部份): 擴闊雅翔道(高架路)北行  
 SCHEME H (PART 2): WIDENING AT  
 NGA CHEUNG ROAD (ELEVATED) NB

方案I: 連接雅翔道(高架路)至西區海底隧道的新連接駁路  
 SCHEME I: NEW LINK ROAD FROM  
 NGA CHEUNG ROAD (ELEVATED) TO WHC

- 圖例:  
 LEGEND:
- 高架結構/道路標記  
ELEVATED STRUCTURE / ROAD MARKING
  - 建議的道路標記  
PROPOSED ROAD MARKING
  - X 將被移除的道路標記  
ROAD MARKING TO BE REMOVED

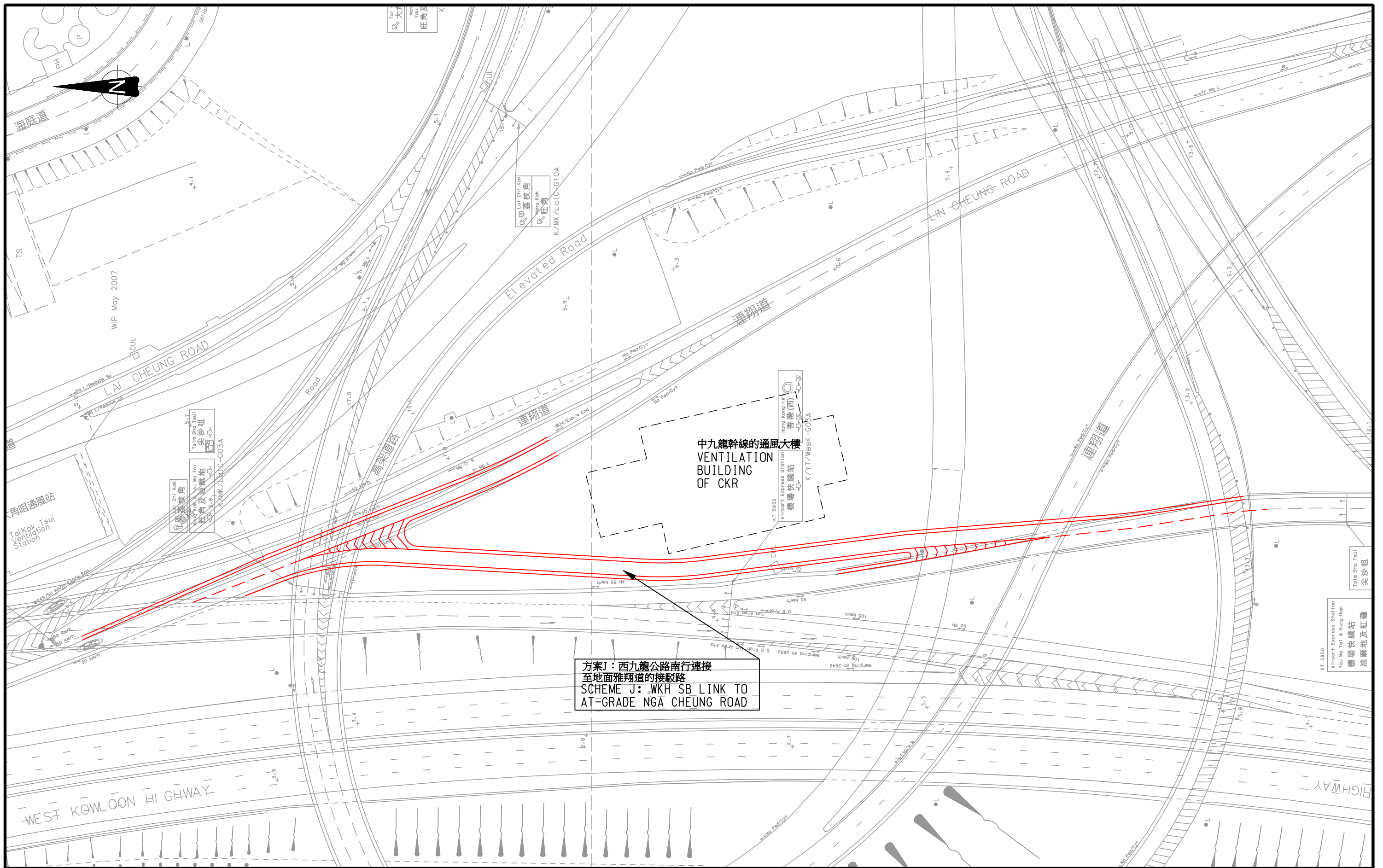
Rev.	Description	Approved	Date

合約編號ID54/2008西九龍填海發展區交通研究  
 ENHANCEMENT OF TRAFFIC ACCESSIBILITY FOR WESTERN HARBOUR TUNNEL

方案H(第二部份)及方案I  
 SCHEME H (PART 2) & SCHEME I

Figure No.	<b>6.4</b>	Rev.	-
Designed By:	HEI	Scale:	1 : 1500
Checked By:	SPC	Date:	DEC. 2009
Ref.: 27816-1/ES/F64.DGN/CKC/06JAN10			



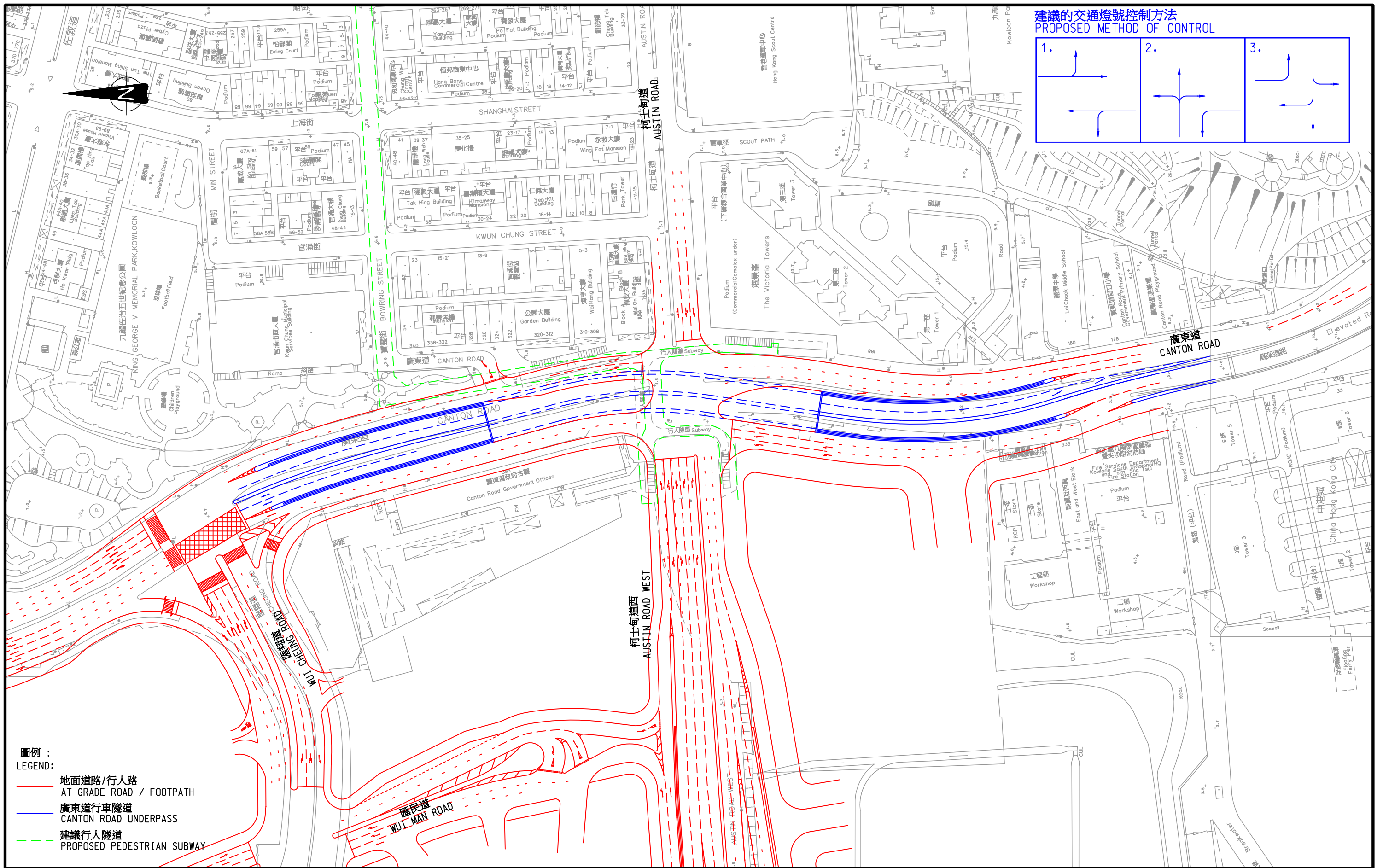


Rev.	Description	Approved	Date

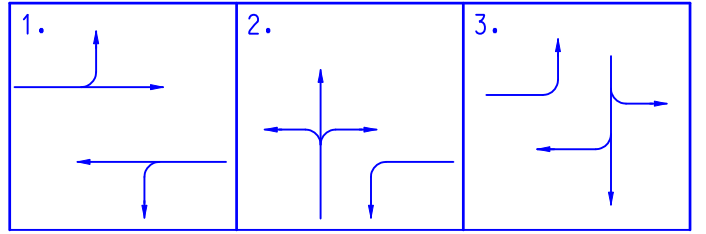
合約編號ID54/2008西九龍填海發展區交通研究  
 ENHANCEMENT OF TRAFFIC ACCESSIBILITY FOR WESTERN HARBOUR TUNNEL  
**方案J：連接西九龍公路南行至地面雅翔道的接駁路**  
**SCHEME J: WKH SB LINK TO AT-GRADE NGA CHEUNG ROAD**

Figure No.	<b>6.5</b>	Rev.	-
Designed By:	HEI	Scale:	1 : 1000
Checked By:	SPC	Date:	DEC. 2009
Ref.: 27814-1/ES/F65.DGN/LKC/30DEC09			





建議的交通燈號控制方法  
PROPOSED METHOD OF CONTROL



- 圖例：  
LEGEND:
- 地面道路/行人路  
AT GRADE ROAD / FOOTPATH
  - 廣東道行車隧道  
CANTON ROAD UNDERPASS
  - - - 建議行人隧道  
PROPOSED PEDESTRIAN SUBWAY

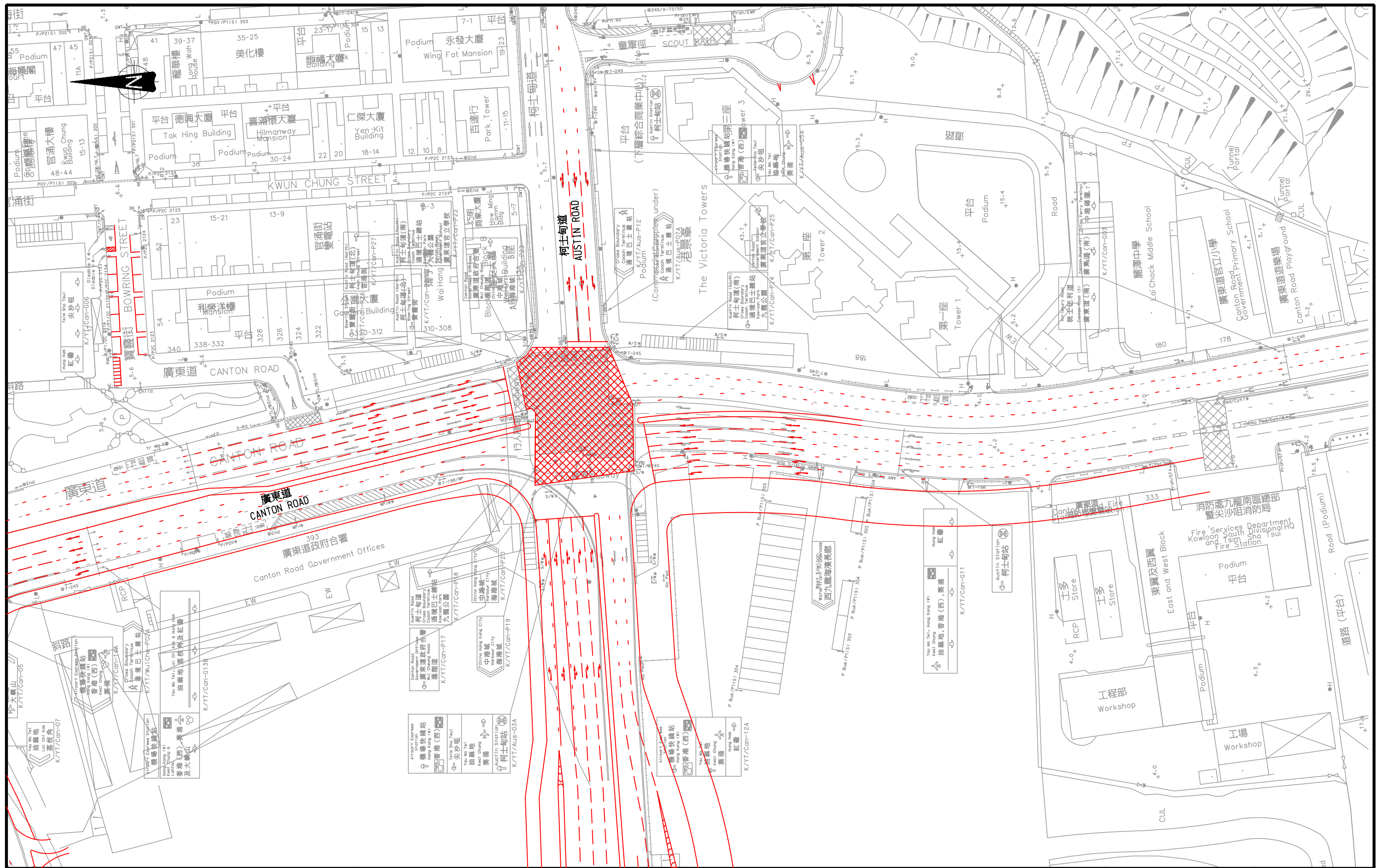
Rev.	Description	Approved	Date

合約編號ID54/2008西九龍填海發展區交通研究  
ENHANCEMENT OF TRAFFIC ACCESSIBILITY FOR WESTERN HARBOUR TUNNEL

**方案Q：繞過廣東道/柯士甸道路口的廣東道行車隧道**  
**SCHEME Q: UNDERPASS ALONG CANTON ROAD TO BYPASS THE JUNCTION OF CANTON ROAD / AUSTIN ROAD**

Figure No.	<b>6.6</b>	Rev.	-
Designed By:	HEI	Scale:	1 : 1500
Checked By:	SPC	Date:	DEC. 2009
Ref.: 27814-1/ES/F66.DGN/CKC/06JAN10			



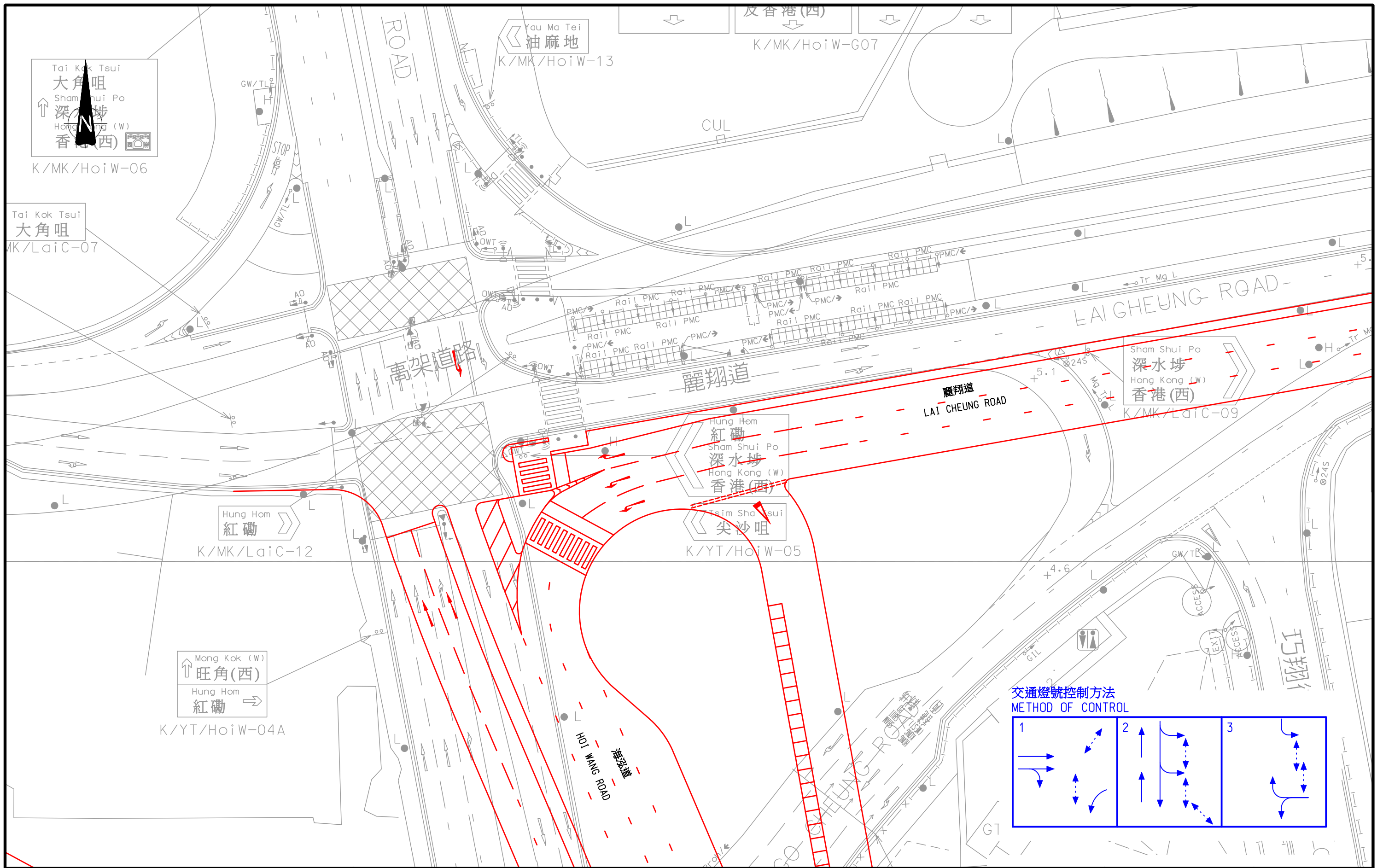


擴闊廣東道  
 WIDENING OF CANTON ROAD

Rev.	Description	Approved	Date

Figure No.	6.7	Rev.	-
Designed By:	HEI	Scale:	1 : 1000
Checked By:	SPC	Date:	DEC. 2009
Ref. : 27816-1/ES/F67.DGN/LIY/29DEC09			





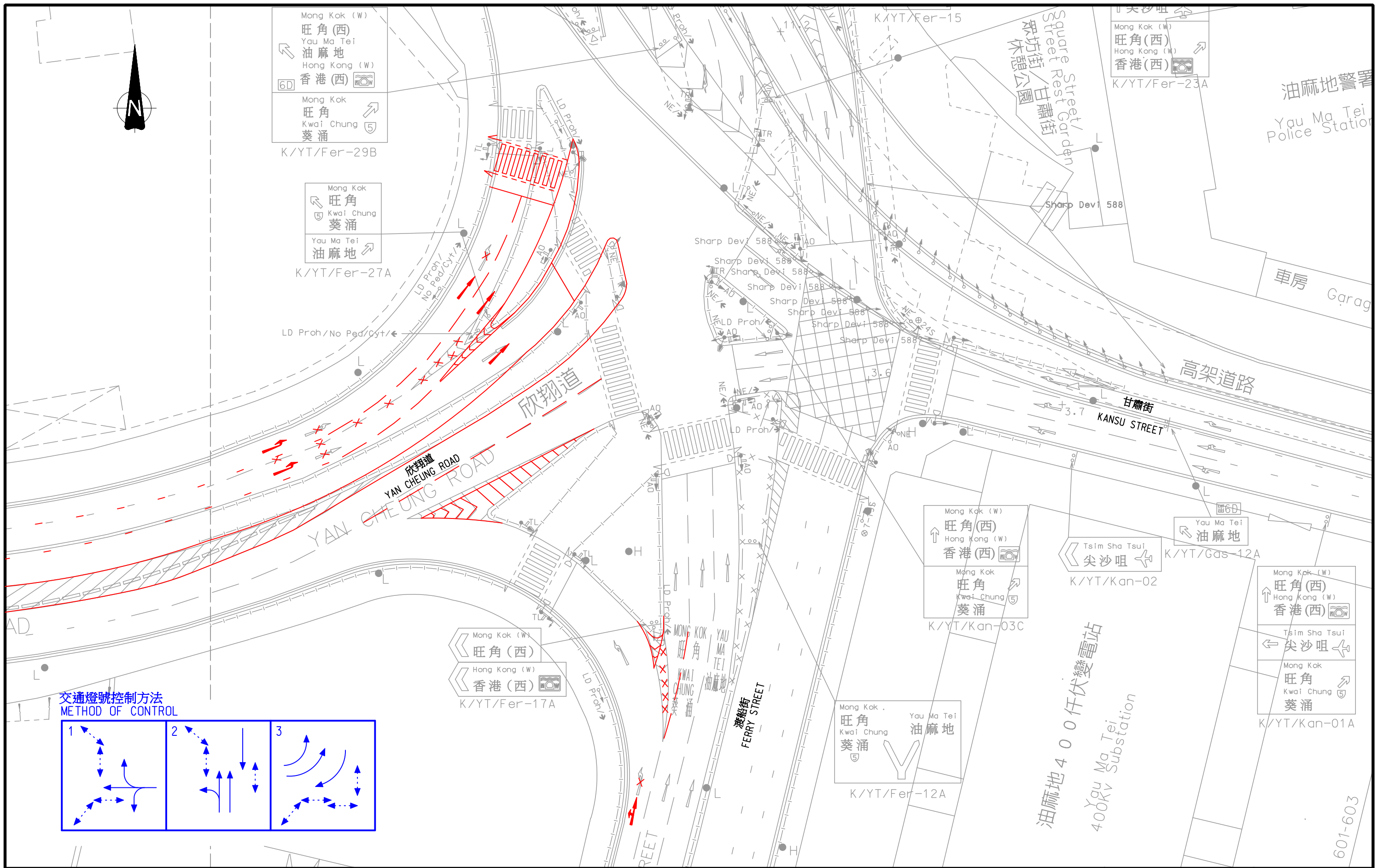
Rev.	Description	Approved	Date

合約編號TD54/2008西九龍填海發展區交通研究  
 AGREEMENT NO. TD 54/2008 WEST KOWLOON RECLAMATION DEVELOPMENT TRAFFIC STUDY  
**建議的麗翔道/海泓道路口遠期交通改善方案**  
**PROPOSED LONG-TERM IMPROVEMENT SCHEME FOR**  
**THE JUNCTION OF LAI CHEUNG ROAD / HOI WANG ROAD**

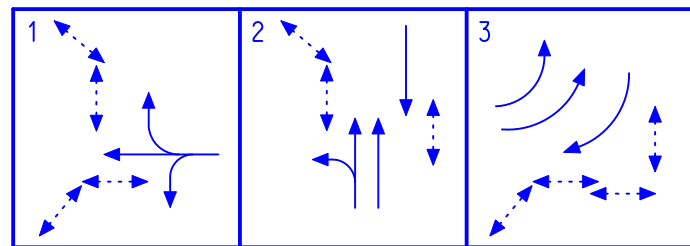
Figure No.	<b>6.8</b>	Rev.	-
Designed By:	HEI	Scale:	1 : 500
Checked By:	SPC	Date:	DEC. 2009
Ref.: 27814-1/ES/F68.DGN/CKC/06JAN10			







交通燈號控制方法  
METHOD OF CONTROL

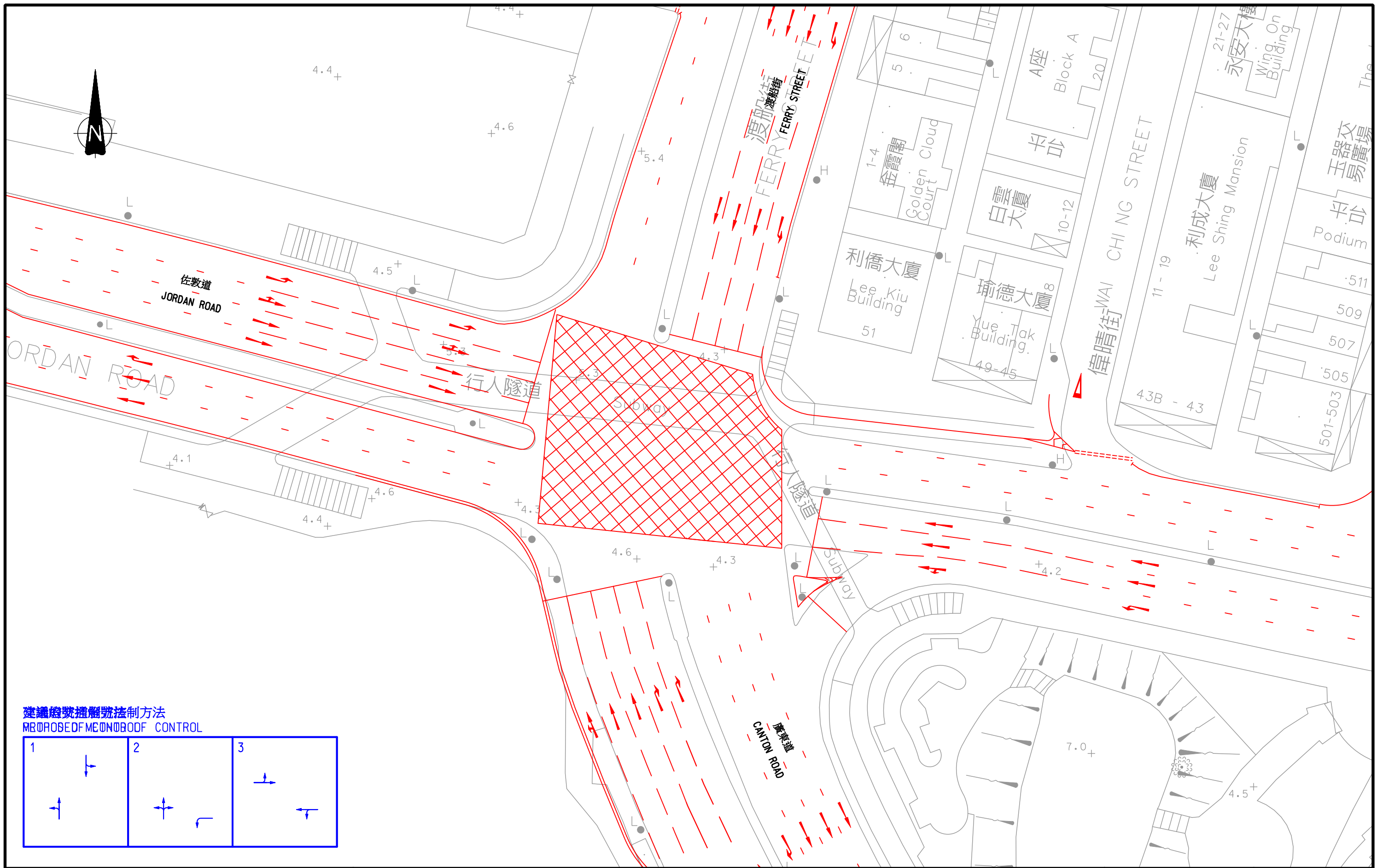


Rev.	Description	Approved	Date

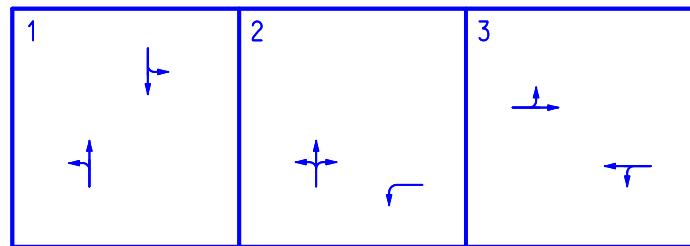
合約編號TD54/2008西九龍填海發展區交通研究  
AGREEMENT NO. TD 54/2008 WEST KOWLOON RECLAMATION DEVELOPMENT TRAFFIC STUDY  
**建議的欣翔道/渡船街/甘肅街路口遠期交通改善方案**  
**PROPOSED LONG-TERM IMPROVEMENT SCHEME FOR THE**  
**JUNCTION OF YAN CHEUNG ROAD / FERRY STREET / KANSU STREET**

Figure No.	<b>6.9</b>	Rev.	-
Designed By:	HEI	Scale:	1 : 500
Checked By:	SPC	Date:	DEC. 2009
Ref.: 27816-1/ES/F69/DGN/CKC/06/JAN10			





建議撥號控制方法  
PROPOSED SIGNAL CONTROL



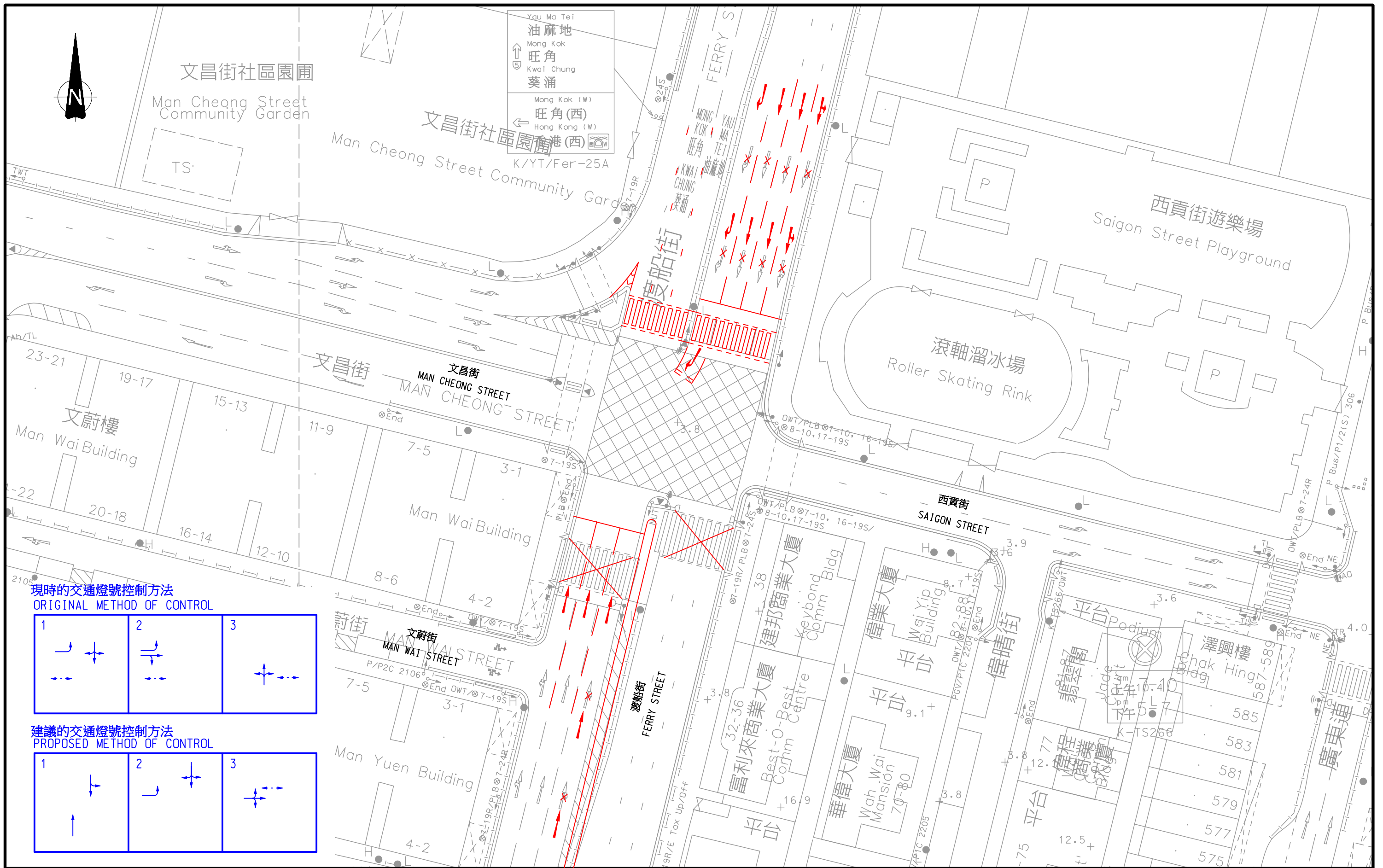
Rev.	Description	Approved	Date

合約編號 ID54/2008 西九龍填海發展區交通研究  
TRAFFIC ANALYSIS FOR CEDD'S SCHEME 6 AND WHC'S NEW SOUTHBOUND INGRESS LINK

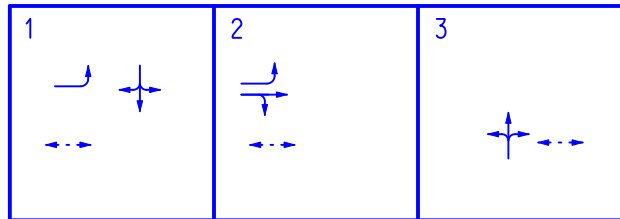
**建議的佐敦道/渡船街/廣東道路口遠期交通改善方案**  
**PROPOSED LONG-TERM IMPROVEMENT SCHEME FOR THE JUNCTION OF JORDAN ROAD / FERRY STREET / CANTON ROAD**

Figure No.	<b>6.10</b>	Rev.	-
Designed By:	HEI	Scale:	1 : 500
Checked By:	SPC	Date:	DEC. 2009
Ref.: 27814-1/ES/F610.DGN/CKC/06JAN10			

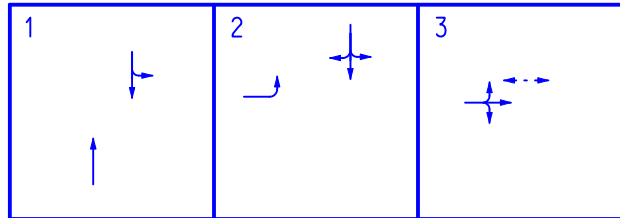




現時的交通燈號控制方法  
ORIGINAL METHOD OF CONTROL



建議的交通燈號控制方法  
PROPOSED METHOD OF CONTROL



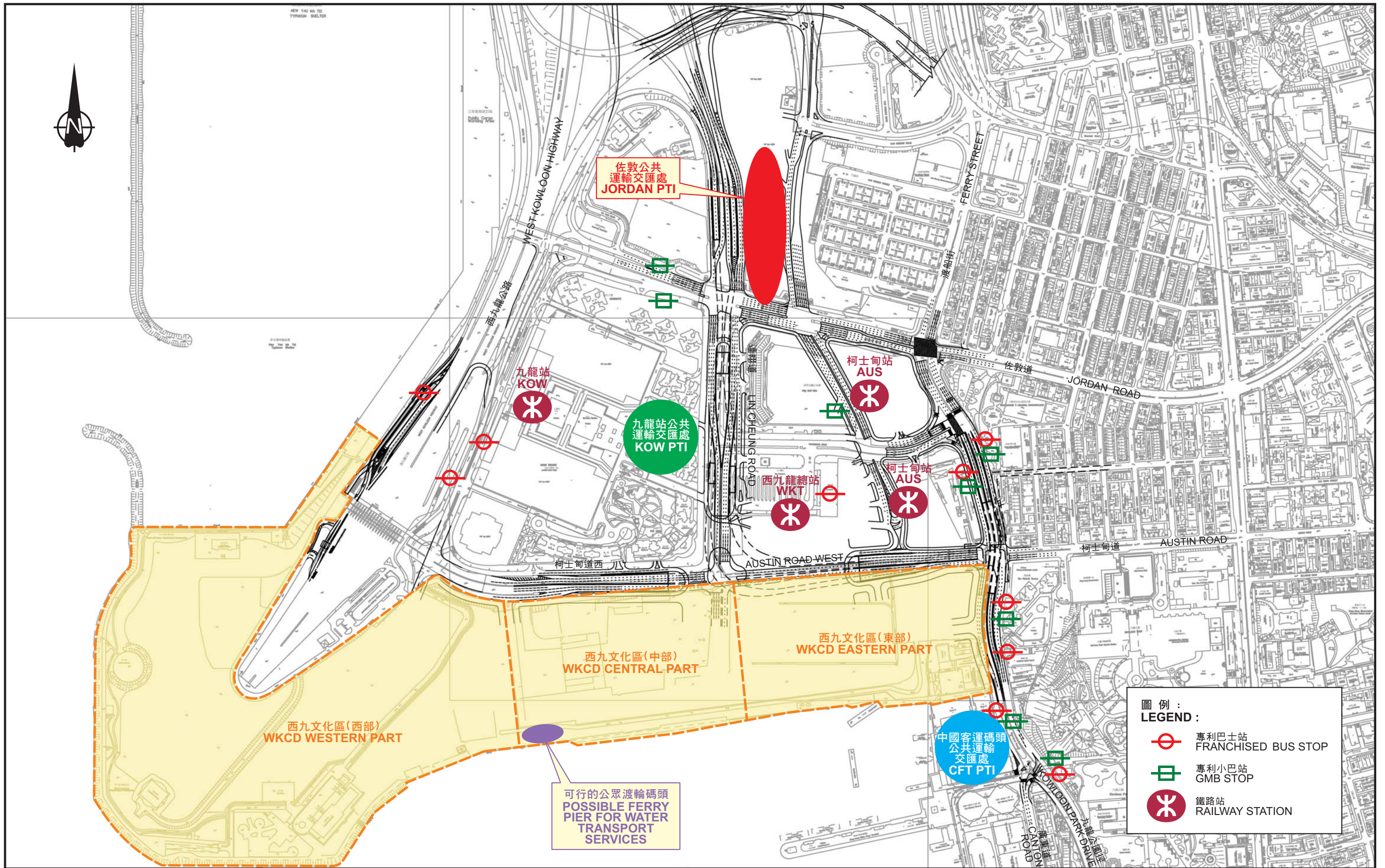
Rev.	Description	Approved	Date

合約編號TD54/2008西九龍填海發展區交通研究  
AGREEMENT NO. TD 54/2008 WEST KOWLOON RECLAMATION DEVELOPMENT TRAFFIC STUDY

**建議的文昌街/渡船街/西貢街路口遠期交通改善方案**  
**PROPOSED LONG-TERM IMPROVEMENT SCHEME FOR THE**  
**JUNCTION OF MAN CHEONG STREET / FERRY STREET / SAIGON STREET**

Figure No.	<b>6.11</b>	Rev.	-
Designed By:	HEI	Scale:	1 : 500
Checked By:	SPC	Date:	DEC. 2009
Ref.: 27816-1/ES/F611.DGN/CKC/06JAN10			





合約編號TD 54/2008西九龍填海發展區交通研究  
 AGREEMENT NO. TD 54/2008 WEST KOWLOON RECLAMATION DEVELOPMENT TRAFFIC STUDY

重點區內的永久公共交通服務  
**PERMANENT PUBLIC TRANSPORT SERVICES IN THE FOCUS AREA**

Figure No.	7.1	Rev.	
Designed By	CWT	Scale	N T S
Checked By	SPC	Date	JAN 2010
CAD Ref.: 27814-1/ES/F71.CDR/LLH/7JAN10			



Rev.	Description	Approved	Date



西九文化區  
WKCD

九龍站及  
Union Square發展項目  
KUD

運輸交匯處  
TRANSPORT  
EXCHANGE

地盤A  
SITE A

地盤D/  
柯士甸站  
(AUS)  
SITE D

地盤C/  
柯士甸站  
(AUS)  
SITE C

可以延長到尖沙咀  
POSSIBLE  
EXTENSIONS  
TO TST

廣東道 CANTON ROAD

柯士甸道 AUSTIN ROAD

寶靈街 BOWRING STREET

佐敦道 JORDAN ROAD

彌敦道

NATHAN ROAD

C2出口  
EXIT C2

E出口  
EXIT E

C1出口  
EXIT C1

A出口  
EXIT A

B1出口  
EXIT B1

B2出口  
EXIT B2

D出口  
EXIT D

圖例：  
LEGEND：

- 佐敦道鐵路站出口  
JORDAN MTR EXITS
- 廣東道路口  
JUNCTION AT CANTON ROAD
- 建議沿柯士甸道行走的行人通道  
PROPOSED PEDESTRIAN LINK ALONG AUSTIN ROAD
- 建議沿寶靈街行走的行人通道  
PROPOSED PEDESTRIAN LINK ALONG BOWRING STREET
- 建議沿佐敦道行走的行人通道  
PROPOSED PEDESTRIAN LINK ALONG JORDAN ROAD
- 建議連接地盤的高架通道  
PROPOSED ELEVATED CONNECTION TO THE SITE
- 現時的行人天橋  
EXISTING FOOTBRIDGE CONNECTION
- 現时的地面行人過路處  
EXISTING CROSSING AT GROUND LEVEL
- 現時的行人隧道  
EXISTING UNDERPASS CROSSING

出口 EXIT	2006年預計的每日行人流量 2006 ESTIMATED DAILY FLOWS
A	27,142
B1	7,084
B2	6,205
C1	2,984
C2	14,402
D	10,733
E	8,319

來源：2006年港鐵內部交通規劃報告  
Source: 2006 MTR In-house Transport Planning Report

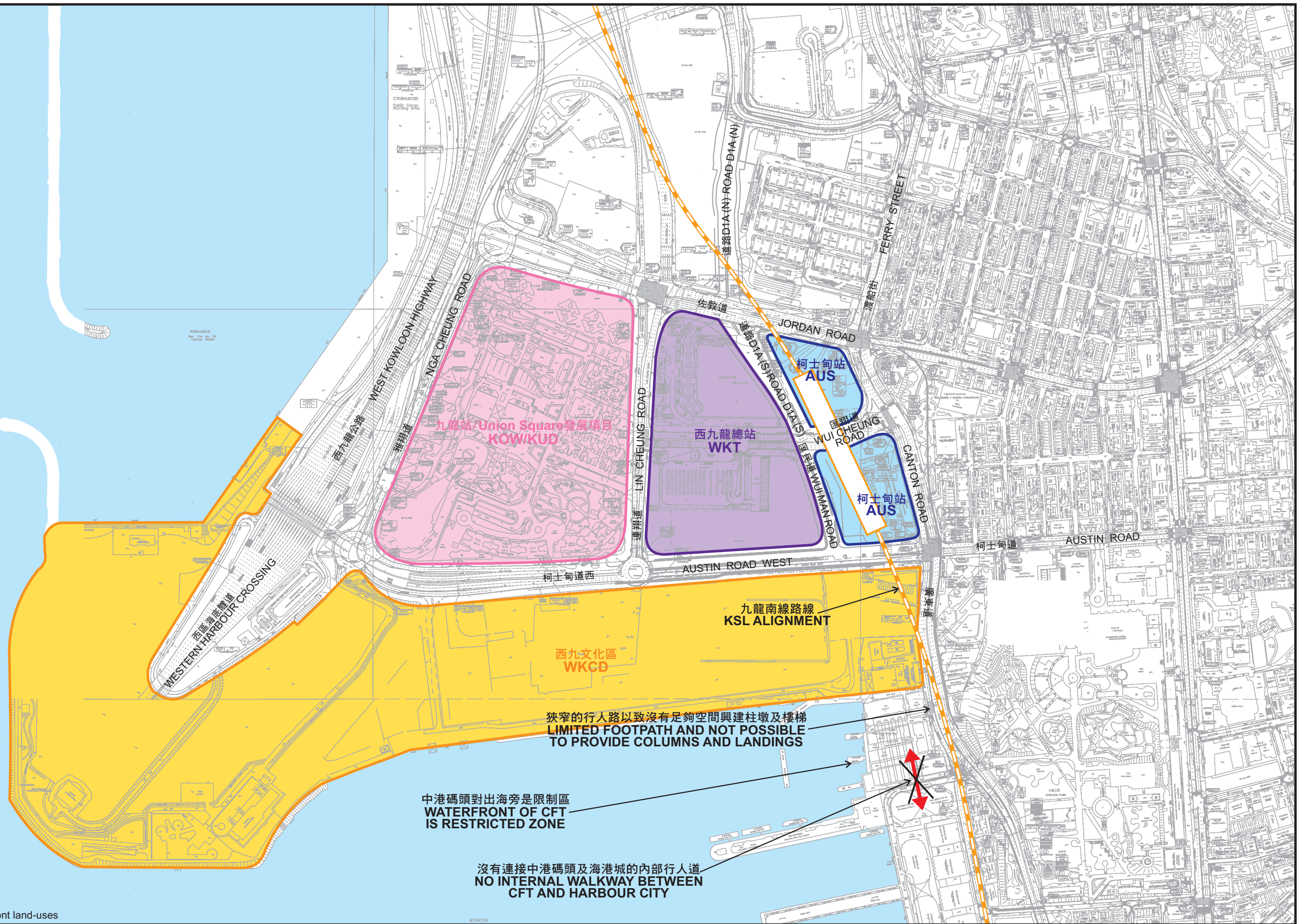
合約編號TD 54/2008西九龍填海發展區交通研究  
AGREEMENT NO. TD 54/2008 WEST KOWLOON RECLAMATION DEVELOPMENT TRAFFIC STUDY

三種可行連接佐敦區的東西向行人通道  
THREE POSSIBLE EAST-WEST PEDESTRIAN CONNECTIONS TO JORDAN DISTRICT

Figure No.	8.1	Rev.	
Designed By	CWT	Scale	N T S
Checked By	SPC	Date	JAN 2010
CAD Ref.: 27814-1/ES/F81.CDR/LLH/7JAN10			



Rev.	Description	Approved	Date



狹窄的行人路以致沒有足夠空間興建柱墩及樓梯  
LIMITED FOOTPATH AND NOT POSSIBLE TO PROVIDE COLUMNS AND LANDINGS

中港碼頭對出海旁是限制區  
WATERFRONT OF CFT IS RESTRICTED ZONE

沒有連接中港碼頭及海港城的內部行人道  
NO INTERNAL WALKWAY BETWEEN CFT AND HARBOUR CITY

註：受制於最終的海旁土地用途  
Note : Subject to ultimate waterfront land-uses

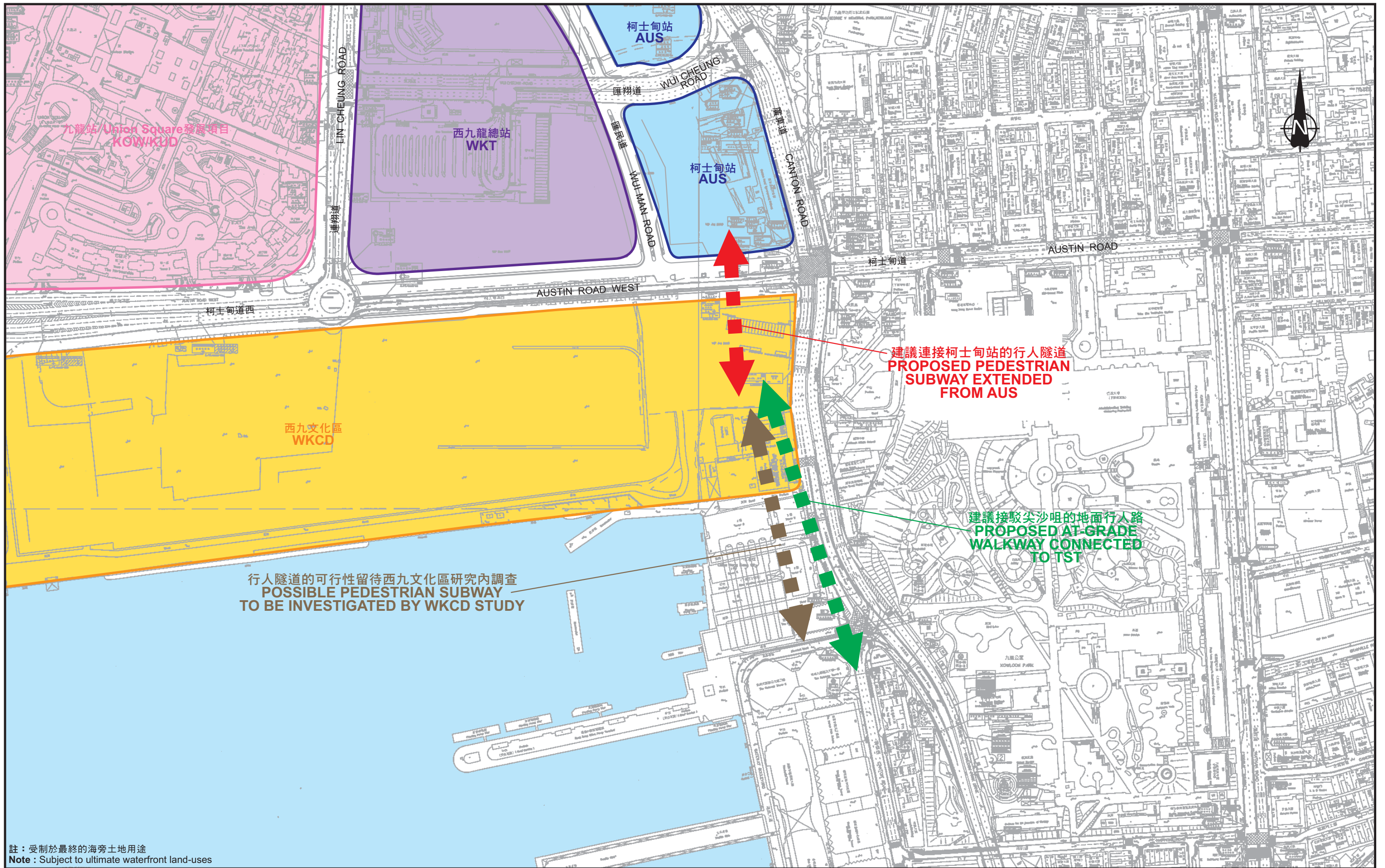
合約編號TD 54/2008西九龍填海發展區交通研究  
AGREEMENT NO. TD 54/2008 WEST KOWLOON RECLAMATION DEVELOPMENT TRAFFIC STUDY

行人連接通道的限制  
PEDESTRIAN CONNECTION CONSTRAINTS

Figure No.	8.2	Rev.	
Designed By	CWT	Scale	N T S
Checked By	SPC	Date	JAN 2010
CAD Ref. : 27814-1/ES/F82.CDR/LLH/7JAN10			



Rev.	Description	Approved	Date



註：受制於最終的海旁土地用途  
 Note : Subject to ultimate waterfront land-uses

合約編號 TD 54/2008 西九龍填海發展區交通研究  
 AGREEMENT NO. TD 54/2008 WEST KOWLOON RECLAMATION DEVELOPMENT TRAFFIC STUDY

建議連接尖沙咀的行人通道  
**PROPOSED CONNECTION TO TSIM SHA TSUI**

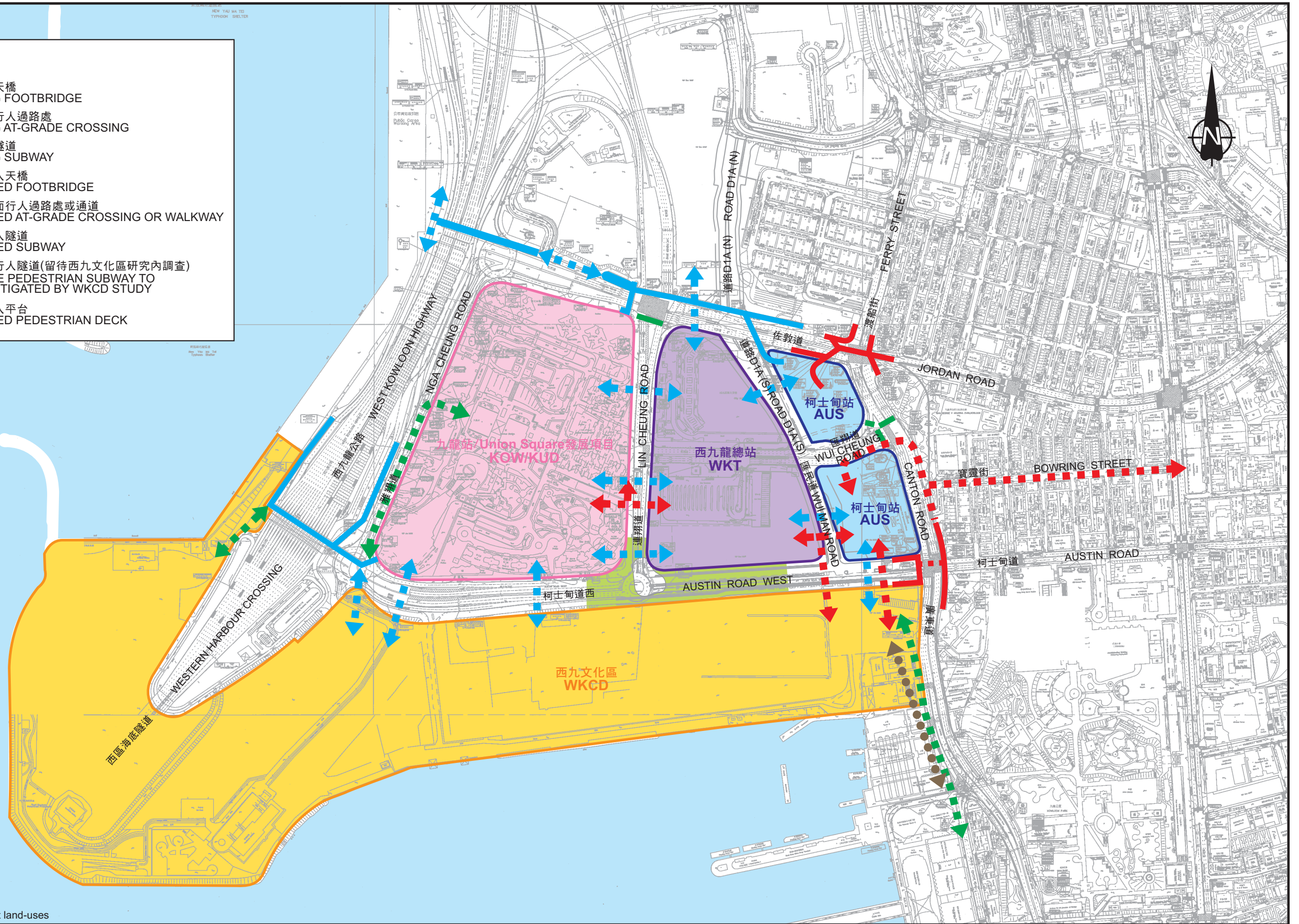
Figure No.	<b>8.3</b>	Rev.	
Designed By	CWT	Scale	N T S
Checked By	SPC	Date	JAN 2010
CAD Ref. : 27814-1/ES/F83.CDR/LLH/7JAN10			



Rev.	Description	Approved	Date

圖例：  
LEGEND :

- 現有行人天橋  
EXISTING FOOTBRIDGE
- 現有地面行人過路處  
EXISTING AT-GRADE CROSSING
- 現有行人隧道  
EXISTING SUBWAY
- ⇄ 建議的行人天橋  
PROPOSED FOOTBRIDGE
- ⇄ 建議的地面行人過路處或通道  
PROPOSED AT-GRADE CROSSING OR WALKWAY
- ⇄ 建議的行人隧道  
PROPOSED SUBWAY
- 其他可能行人隧道(留待西九文化區研究內調查)  
POSSIBLE PEDESTRIAN SUBWAY TO BE INVESTIGATED BY WKCD STUDY
- 建議的行人平台  
PROPOSED PEDESTRIAN DECK



註：受制於最終的海旁土地用途  
Note : Subject to ultimate waterfront land-uses

合約編號TD 54/2008西九龍填海發展區交通研究  
 AGREEMENT NO. TD 54/2008 WEST KOWLOON RECLAMATION DEVELOPMENT TRAFFIC STUDY  
**重點區內現有及建議的行人設施摘要(取決於西九龍總站及西九文化區的規劃)**  
**SUMMARY OF PEDESTRIAN FACILITIES WITHIN FOCUS AREA : EXISTING AND PROPOSED**  
**(SUBJECT TO FURTHER WKT AND WKCD PLANNING)**

Rev.	Description	Approved	Date

Figure No.	<b>8.4</b>
Designed By	Scale
CWT	N T S
Checked By	Date
SPC	JAN 2010
CAD Ref. : 27814-1/ES/F84.CDR/LLH/7JAN10	

